

## Test Report

No. CANEC1317382405

Date: 15 Nov 2013

Page 1 of 5

TAMPERSEALS PACKING (SHENZHEN) CO., LTD

77 BLDG,LAI WUSHAN IND.ZONE, LONGHUA TOWN, BAO'AN DIST, SHENZHEN, P.R.CHINA

The following sample(s) was/were submitted and identified on behalf of the clients as : Security Tamper Evident Bags

SGS Job No. : CP13-057779 - SZ  
Client Ref. Info. : Security Tamper Evident Bags  
Date of Sample Received : 08 Nov 2013  
Testing Period : 08 Nov 2013 - 14 Nov 2013  
Test Requested : Selected test(s) as requested by client.  
Test Method : Please refer to next page(s).  
Test Results : Please refer to next page(s).  
Conclusion : Based on the performed tests on submitted samples, the results of Lead, Mercury, Cadmium, Hexavalent chromium, Polybrominated biphenyls (PBB), Polybrominated diphenyl ethers (PBDE) comply with the limits as set by RoHS Directive 2011/65/EU Annex II; recasting 2002/95/EC.

Signed for and on behalf of  
SGS-CSTC Ltd.

Echo

Echo Yeung  
Approved Signatory

This document is issued by the Company subject to its General Conditions of Service printed overleaf, available on request or accessible at <http://www.sgs.com/en/Terms-and-Conditions.aspx> and, for electronic format documents, subject to Terms and Conditions for Electronic Documents at <http://www.sgs.com/en/Terms-and-Conditions/Terms-e-Document.aspx>. Attention is drawn to the limitation of liability, indemnification and jurisdiction issues defined therein. Any holder of this document is advised that information contained herein reflects the Company's findings at the time of its intervention only and within the limits of Client's instructions, if any. The Company's sole responsibility is to its Client and this document does not exonerate parties to a transaction from exercising all their rights and obligations under the transaction documents. This document cannot be reproduced except in full, without prior written approval of the Company. Any unauthorized alteration, forgery or falsification of the content or appearance of this document is unlawful and offenders may be prosecuted to the fullest extent of the law. Unless otherwise stated the results shown in this test report refer only to the sample(s) tested.

Test Results :

Test Part Description :

| Specimen No. | SGS Sample ID    | Description                           |
|--------------|------------------|---------------------------------------|
| 1            | CAN13-173824.003 | Lt-gray plastic bag w/ black printing |

Remarks :

- (1) 1 mg/kg = 1 ppm = 0.0001%
- (2) MDL = Method Detection Limit
- (3) ND = Not Detected ( < MDL )
- (4) "-" = Not Regulated

**RoHS Directive 2011/65/EU**

- Test Method :
- (1)With reference to IEC 62321-5:2013, determination of Cadmium by ICP-OES.
  - (2)With reference to IEC 62321-5:2013, determination of Lead by ICP-OES.
  - (3)With reference to IEC 62321-4:2013, determination of Mercury by ICP-OES.
  - (4)With reference to IEC 62321:2008, determination of Hexavalent Chromium by Colorimetric Method using UV-Vis.
  - (5)With reference to IEC 62321:2008, determination of PBBs and PBDEs by GC-MS.

| <u>Test Item(s)</u>        | <u>Limit</u> | <u>Unit</u> | <u>MDL</u> | <u>003</u> |
|----------------------------|--------------|-------------|------------|------------|
| Cadmium (Cd)               | 100          | mg/kg       | 2          | ND         |
| Lead (Pb)                  | 1,000        | mg/kg       | 2          | ND         |
| Mercury (Hg)               | 1,000        | mg/kg       | 2          | ND         |
| Hexavalent Chromium (CrVI) | 1,000        | mg/kg       | 2          | ND         |
| Sum of PBBs                | 1,000        | mg/kg       | -          | ND         |
| Monobromobiphenyl          | -            | mg/kg       | 5          | ND         |
| Dibromobiphenyl            | -            | mg/kg       | 5          | ND         |
| Tribromobiphenyl           | -            | mg/kg       | 5          | ND         |
| Tetrabromobiphenyl         | -            | mg/kg       | 5          | ND         |
| Pentabromobiphenyl         | -            | mg/kg       | 5          | ND         |
| Hexabromobiphenyl          | -            | mg/kg       | 5          | ND         |
| Heptabromobiphenyl         | -            | mg/kg       | 5          | ND         |
| Octabromobiphenyl          | -            | mg/kg       | 5          | ND         |
| Nonabromobiphenyl          | -            | mg/kg       | 5          | ND         |
| Decabromobiphenyl          | -            | mg/kg       | 5          | ND         |
| Sum of PBDEs               | 1,000        | mg/kg       | -          | ND         |
| Monobromodiphenyl ether    | -            | mg/kg       | 5          | ND         |

This document is issued by the Company subject to its General Conditions of Service printed overleaf, available on request or accessible at <http://www.sgs.com/en/Terms-and-Conditions.aspx> and, for electronic format documents, subject to Terms and Conditions for Electronic Documents at <http://www.sgs.com/en/Terms-and-Conditions/Terms-e-Document.aspx>. Attention is drawn to the limitation of liability, indemnification and jurisdiction issues defined therein. Any holder of this document is advised that information contained herein reflects the Company's findings at the time of its intervention only and within the limits of Client's instructions, if any. The Company's sole responsibility is to its Client and this document does not exonerate parties to a transaction from exercising all their rights and obligations under the transaction documents. This document cannot be reproduced except in full, without prior written approval of the Company. Any unauthorized alteration, forgery or falsification of the content or appearance of this document is unlawful and offenders may be prosecuted to the fullest extent of the law. Unless otherwise stated the results shown in this test report refer only to the sample(s) tested.

## Test Report

No. CANEC1317382405

Date: 15 Nov 2013

Page 3 of 5

| <u>Test Item(s)</u>      | <u>Limit</u> | <u>Unit</u> | <u>MDL</u> | <u>003</u> |
|--------------------------|--------------|-------------|------------|------------|
| Dibromodiphenyl ether    | -            | mg/kg       | 5          | ND         |
| Tribromodiphenyl ether   | -            | mg/kg       | 5          | ND         |
| Tetrabromodiphenyl ether | -            | mg/kg       | 5          | ND         |
| Pentabromodiphenyl ether | -            | mg/kg       | 5          | ND         |
| Hexabromodiphenyl ether  | -            | mg/kg       | 5          | ND         |
| Heptabromodiphenyl ether | -            | mg/kg       | 5          | ND         |
| Octabromodiphenyl ether  | -            | mg/kg       | 5          | ND         |
| Nonabromodiphenyl ether  | -            | mg/kg       | 5          | ND         |
| Decabromodiphenyl ether  | -            | mg/kg       | 5          | ND         |

### Notes :

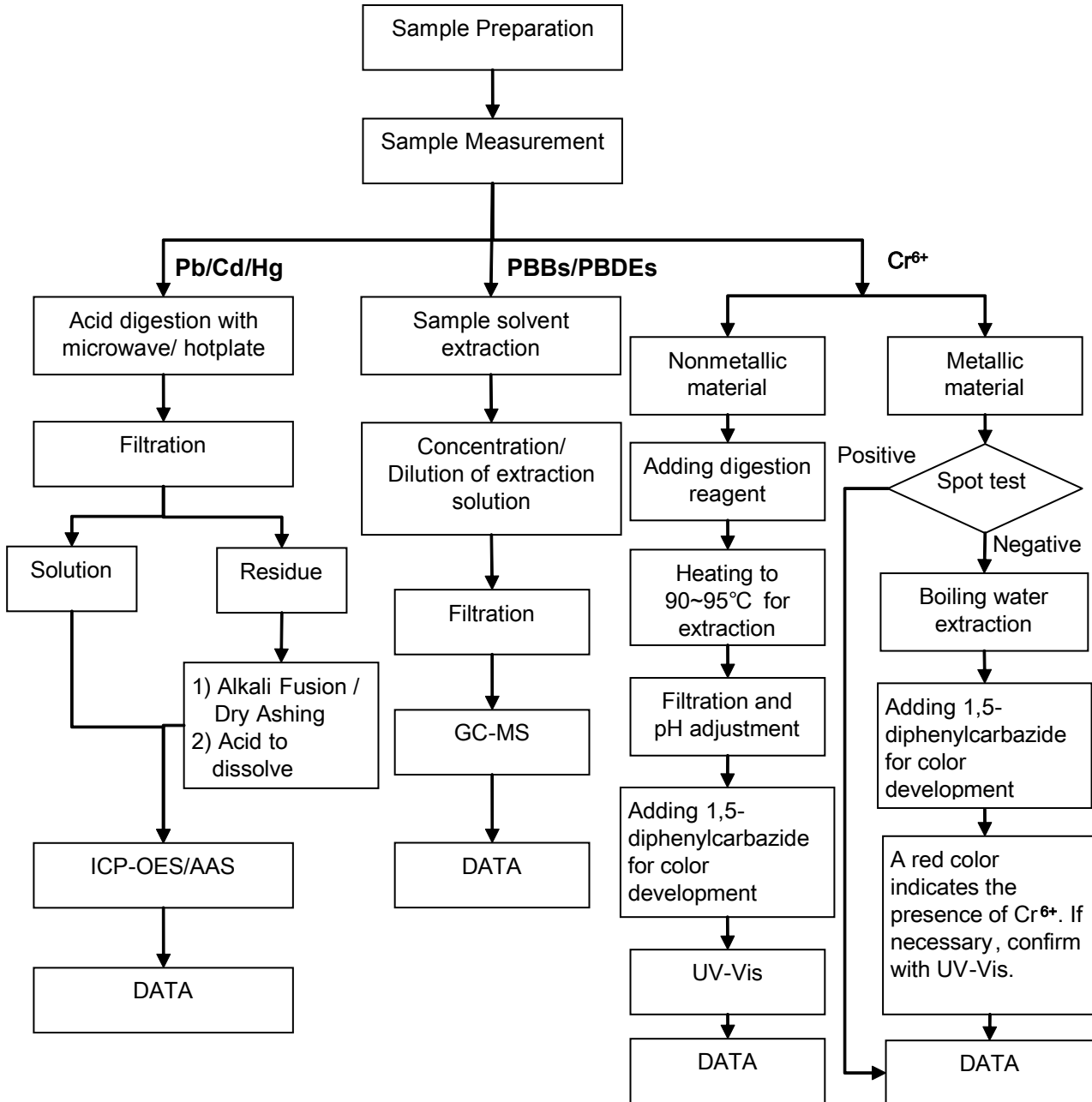
- (1) The maximum permissible limit is quoted from the directive 2011/65/EU, Annex II

This document is issued by the Company subject to its General Conditions of Service printed overleaf, available on request or accessible at <http://www.sgs.com/en/Terms-and-Conditions.aspx> and, for electronic format documents, subject to Terms and Conditions for Electronic Documents at <http://www.sgs.com/en/Terms-and-Conditions/Terms-e-Document.aspx>. Attention is drawn to the limitation of liability, indemnification and jurisdiction issues defined therein. Any holder of this document is advised that information contained herein reflects the Company's findings at the time of its intervention only and within the limits of Client's instructions, if any. The Company's sole responsibility is to its Client and this document does not exonerate parties to a transaction from exercising all their rights and obligations under the transaction documents. This document cannot be reproduced except in full, without prior written approval of the Company. Any unauthorized alteration, forgery or falsification of the content or appearance of this document is unlawful and offenders may be prosecuted to the fullest extent of the law. Unless otherwise stated the results shown in this test report refer only to the sample(s) tested.

ATTACHMENTS

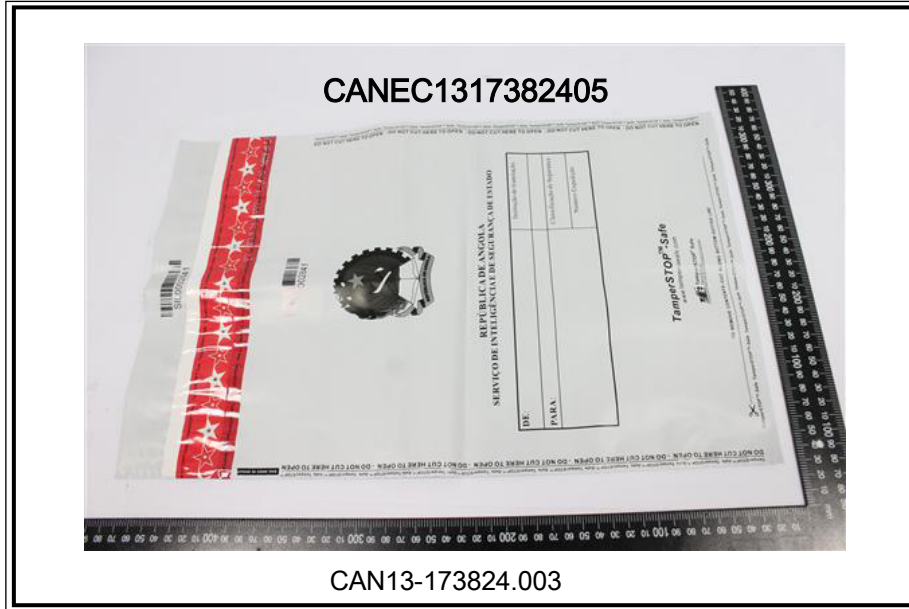
RoHS Testing Flow Chart

- 1) Name of the person who made testing: Michael Tso / Cutey Yu
- 2) Name of the person in charge of testing: Adams Yu / Yolanda Wei
- 3) These samples were dissolved totally by pre-conditioning method according to below flow chart (Cr<sup>6+</sup> and PBBs/PBDEs test method excluded).



This document is issued by the Company subject to its General Conditions of Service printed overleaf, available on request or accessible at <http://www.sgs.com/en/Terms-and-Conditions.aspx> and, for electronic format documents, subject to Terms and Conditions for Electronic Documents at <http://www.sgs.com/en/Terms-and-Conditions/Terms-e-Document.aspx>. Attention is drawn to the limitation of liability, indemnification and jurisdiction issues defined therein. Any holder of this document is advised that information contained herein reflects the Company's findings at the time of its intervention only and within the limits of Client's instructions, if any. The Company's sole responsibility is to its Client and this document does not exonerate parties to a transaction from exercising all their rights and obligations under the transaction documents. This document cannot be reproduced except in full, without prior written approval of the Company. Any unauthorized alteration, forgery or falsification of the content or appearance of this document is unlawful and offenders may be prosecuted to the fullest extent of the law. Unless otherwise stated the results shown in this test report refer only to the sample(s) tested.

Sample photo:



SGS authenticate the photo on original report only

\*\*\* End of Report \*\*\*

This document is issued by the Company subject to its General Conditions of Service printed overleaf, available on request or accessible at <http://www.sgs.com/en/Terms-and-Conditions.aspx> and, for electronic format documents, subject to Terms and Conditions for Electronic Documents at <http://www.sgs.com/en/Terms-and-Conditions/Terms-e-Document.aspx>. Attention is drawn to the limitation of liability, indemnification and jurisdiction issues defined therein. Any holder of this document is advised that information contained herein reflects the Company's findings at the time of its intervention only and within the limits of Client's instructions, if any. The Company's sole responsibility is to its Client and this document does not exonerate parties to a transaction from exercising all their rights and obligations under the transaction documents. This document cannot be reproduced except in full, without prior written approval of the Company. Any unauthorized alteration, forgery or falsification of the content or appearance of this document is unlawful and offenders may be prosecuted to the fullest extent of the law. Unless otherwise stated the results shown in this test report refer only to the sample(s) tested.